



# The Rockette

JUNE 2016

A Publication of the Sequoia Gem and Mineral Society (SGMS)

P. O. Box 1245, Redwood City, CA 94064

<http://www.sequoiagemandmineralsociety.org>

## Carol's Corner

### Summer BBQ and Annual Show

Summer is here and with it thoughts and actions turn towards our Annual BBQ and Annual Show. Put it on your calendar and think about what your contribution will be. Do not leave everything to the Board and Chairs, we need EVERYBODY'S participation.

Go to the BBQ, bring a guest, drive a member, donate a door prize, bring a dish to share, bring your performance talent! Have FUN!!

Go to the Annual Show, sign up to help with setup, attend the dealer meet and greet Friday dinner, sign up for morning or afternoon at one of the areas, sign up for a case to show off your collection, sign up to be overnight Saturday Security watch, get donations for food, pass out the show cards and talk it up on your Facebook or Twitter, tell your other clubs about it! HELP MAKE IT A SUCCESS!!

Why do we have a show??

Good question! There is more than one answer, depending on whether you are a Participant or an Observer.

1. The annual show gives the Society members an opportunity to Show Off the work they have done or the specimens they have collected.

2. It is an Event which is looked forward to annually. It is a great time to renew acquaintances with friends and fellow rockhounds from near and far.

#### SGMS Mission Statement

The Sequoia Gem & Mineral Society serves the community by providing education in the Earth Sciences and training in the lapidary arts and, in doing so, promotes ethical behavior, sound resource stewardship, and good fellowship. The Society fulfills its mission through year-round offerings of field trips, lapidary workshops, outreach presentations, public mineral displays, and monthly informational meetings open to the public.

Member of:

California Federation of Mineralogical Societies, Inc.  
American Federation of Mineralogical Societies  
North Bay Field Trip Association

Exchange bulletins are welcome. You are free to reprint if credit or citation is noted.

3. It is Educational. Looking at the cases, watching the demonstrators, talking with them and asking questions, is a Crash Course in the many facets of the hobby.

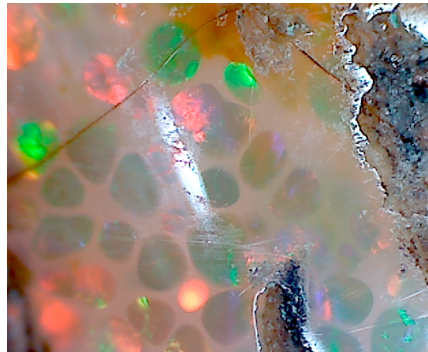
4. It Promotes the Hobby. By word of mouth, brochures, tickets, etc., members can spread the hobby to those who might not know about it.

Carol Corden

SGMS President 2009-2016

=====

## Gemstone Beauty



## Opal

This close-up photo taken by Peter Adams at the Santa Clara club event shows the bright colors that opals are known for. Peter has many wonderful microscopic images in his files.

=====

## MUSIC ON THE SQUARE

### An Opportunity to Sell your work!

Join us on Friday, June 17 from 5-8:30 pm as we have a table at the event in Redwood City. The group gives a space to non-profits each week and we were selected! This is a great opportunity to let people know about the club, our show and more! Our members also have the opportunity to sell specimens, cabochons, or any finished jewelry we might have done. Bring your wonderful things, set your price and just 10% will go to the club. For more information, contact your Editor.

=====

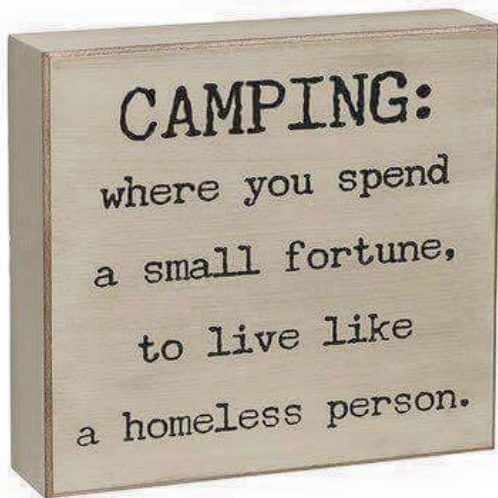
## LAPIDARY SHOP UPDATE

Classes are ongoing! If you ever want to come to the shop and grind a rock or polish a cab, now is your opportunity! See the website for information on dates and times. Thank you to all of our wonderful instructors!



## Treasurer needed!

We really need someone to step in and take over. It is a fairly easy job for anyone who can deal with a little money and budgets.



## **THE SGMS SHOW!**

**Vendors Needed. Tumbling material needed. Volunteers needed too!**  
Reminder of new dates: **September 24, 25 2016**

The show cards have arrived. Please pick some up and distribute when you attend a show or see someone who might be interested.

As you are aware, the dates have changed for our show. Your assistance is needed! If you have some material we can use for tumbling to create the bags of stones for kids, please bring to the next meeting or let us know and we can pick it up.

**In addition, Carol is collecting the door prizes and has some lovely things such as a Mikasa bowl, emerald cluster and more.**

=====

### **The Final Ruling on Ivory from the African Elephant**

In a nutshell, the protection of these endangered animals needs to increase. Please see the website for the entire 114 page document.

<http://www.fws.gov/international/pdf/final-rule-african-4d.pdf>

## Dates of SGMS meetings for 2016:

Mon. June 20—at our usual meeting place. Bring your favorite gem or mineral and talk about it. Bob Simms will be talking about Sodalite

Other meeting dates:            June 20                            Aug 15  
    Sept 19                            Oct 17                            Nov. 21

**Annual Show (NEW DATE) :** Held on the 24<sup>th</sup> and 25<sup>th</sup> of Sept. 2016

**Summer Picnic:** Summer planning. It's official, MARK YOUR CALENDARS! Our annual BBQ/Potluck will be at Cathy Phalen's house. Saturday, July 23 from 10:30 to 3:00.

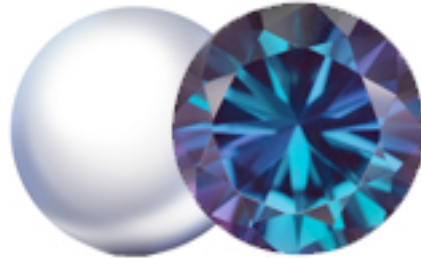
More details to follow. Do you sing or play guitar? Maybe we can have entertainment. Any other talents out there? We might also have a sale of specimens/slabs and equipment if anyone has something. Everybody's help is needed to make it a success! More to come.

Unless specified, the meetings will be held at the usual place, The Sequoia Gem and Mineral Society holds its General Meetings from 7-9pm on the third Monday of the month (with exceptions for holidays, or during July and December). Each meeting features a presentation, raffle drawings for specimens, a member Show & Tell, and access to the club library. **Guests are welcome to join us!**

Community Activities Building, 1400 Roosevelt Ave., Redwood City, CA 94062

### June Birthstone | Pearl | Alexandrite

June counts these gems as birthstones: **pearl** and **Alexandrite**. Pearls have been wildly popular in jewelry for centuries because of their natural beauty. **Alexandrite** are extremely rare and desirable since they change color based on the lighting.



because of gemstones they

248-7155

#### ROSTER OF OFFICERS AND CHAIRS

President	Carol Corden	650-		
	<a href="mailto:cordencarol@yahoo.com">cordencarol@yahoo.com</a>			
Vice President	Bob Simms	650-222-0968		<a href="mailto:loomisites@netscape.net">loomisites@netscape.net</a>
Annual Show Chairs:	Carol Corden and Bob Simms			
Web Mistress:	Valerie Concello	650-369-9539		<a href="mailto:vconcello@gmail.com">vconcello@gmail.com</a>
Treasurer:	OPEN POSITION			
Federation Director	Paul Rose	650-302-6684		<a href="mailto:1sarose@comcast.net">1sarose@comcast.net</a>
Alternate Federation Liaison	Catherine Fraser	650-954-6020		<a href="mailto:catherinef@fraseradv.com">catherinef@fraseradv.com</a>
<b>COMMITTEE CHAIRS</b>				
Field Trips	OPEN POSITION			
Monthly Programs –everyone!!!	Send suggestions to <a href="mailto:cordencarol@yahoo.com">cordencarol@yahoo.com</a>			
Outside Exhibits	Carol Corden, Cathy Phalen, Paul Rose	650-248-7155		<a href="mailto:cordencarol@yahoo.com">cordencarol@yahoo.com</a>
Membership	Peter Adams	650-325-2363		<a href="mailto:organologist@aol.com">organologist@aol.com</a>
	Marty Krikorion			
Sunshine, Ways & Means,	Cathy Phalen	650-365-2956		<a href="mailto:catphalen@comcast.net">catphalen@comcast.net</a>
Cases, Storage, Library, Lapidary	Shop Manager, Auctions/Estates, Refreshments			
Magazines, Historian/Awards--	Preston Bingham	650-368-6351		<a href="mailto:preston.bingham@att.net">preston.bingham@att.net</a>
Rockette Editor/Publisher,	Catherine Fraser	650-954-6020		<a href="mailto:catherinef@fraseradv.com">catherinef@fraseradv.com</a>
Advertising				